

fissaggi per cilindri compatti ISO 21287

fixing elements for ISO 21287 compact cylinders

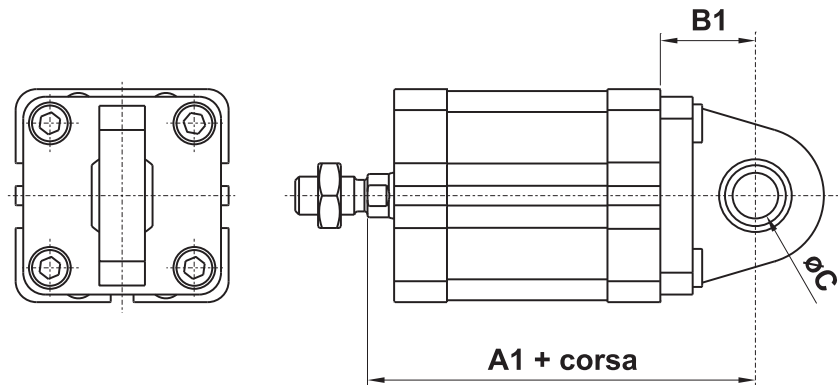


Per altre informazioni vedi le pagine 538-544 (fissaggi per cilindri ISO 15552)

For more information refer to pages 538-544 (fixing elements for cylinders ISO 15552)

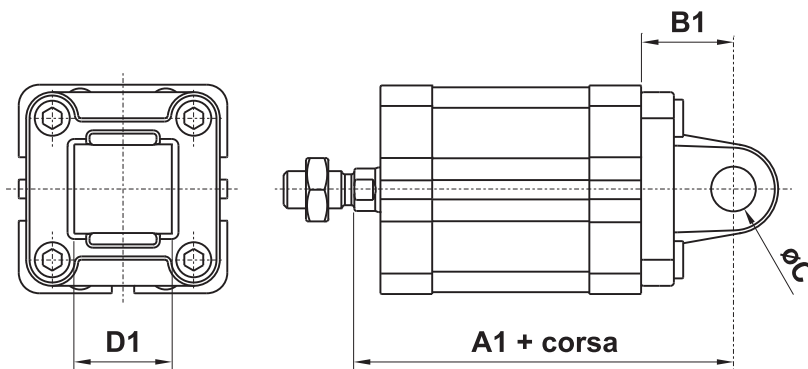
CERNIERA MASCHIO SNODO SFERICO (ø32 ... ø100)

CMSS...



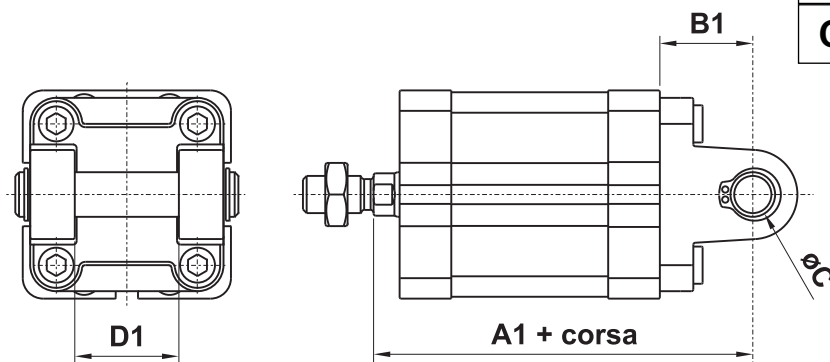
CERNIERA MASCHIO (ø25 ... ø100)

CMIS...
CMKS...



CERNIERA FEMMINA CON PERNO (ø32 ... ø100)

CFIS...
CFKS...



ø	A1	B1	C	D1
25	65	20	8	16
32	73	22	10	26
40	77	25	12	28
50	80	27	12	32
63	89	32	16	40
80	100	36	16	50
100	118	41	20	60

fissaggi per cilindri compatti ISO 21287

fixing elements for ISO 21287 compact cylinders



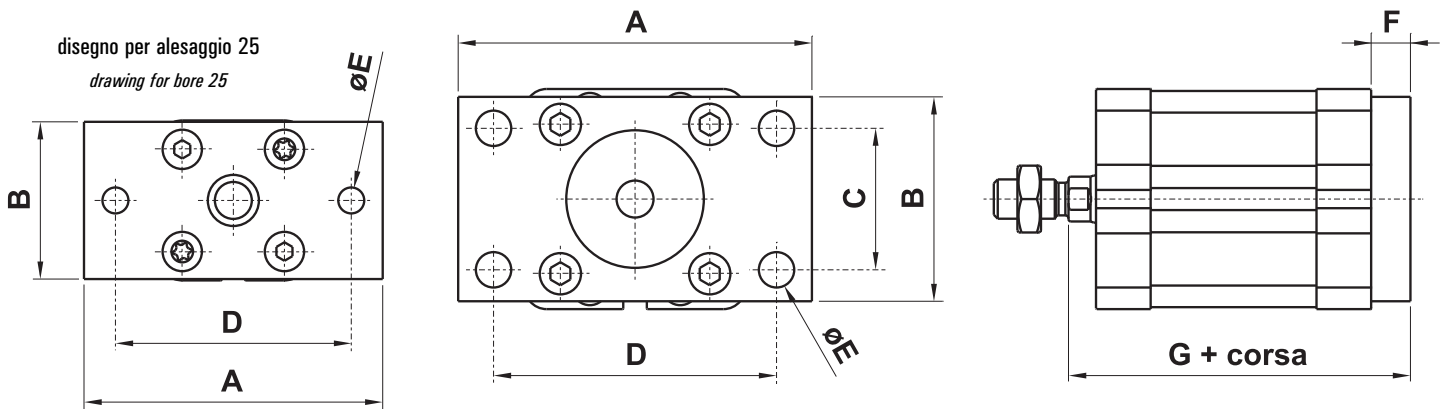
Per altre informazioni vedi le pagine 538-544 (fissaggi per cilindri ISO 15552)

For more information refer to pages 538-544 (fixing elements for cylinders ISO 15552)

FLANGIA

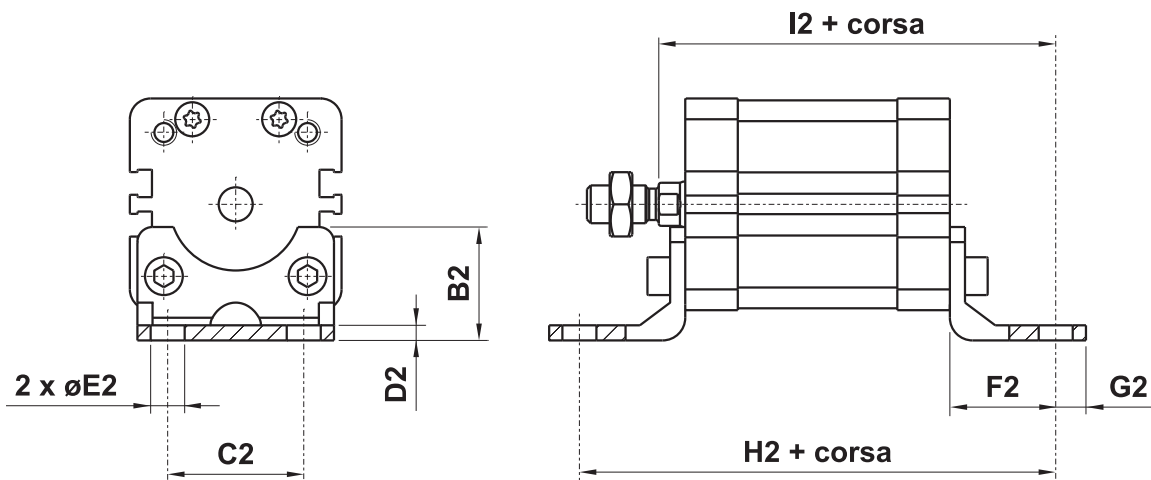
FLIS...

disegno per alesaggio 32-100
drawing for bore 32-100



PIEDINO

PBIS...

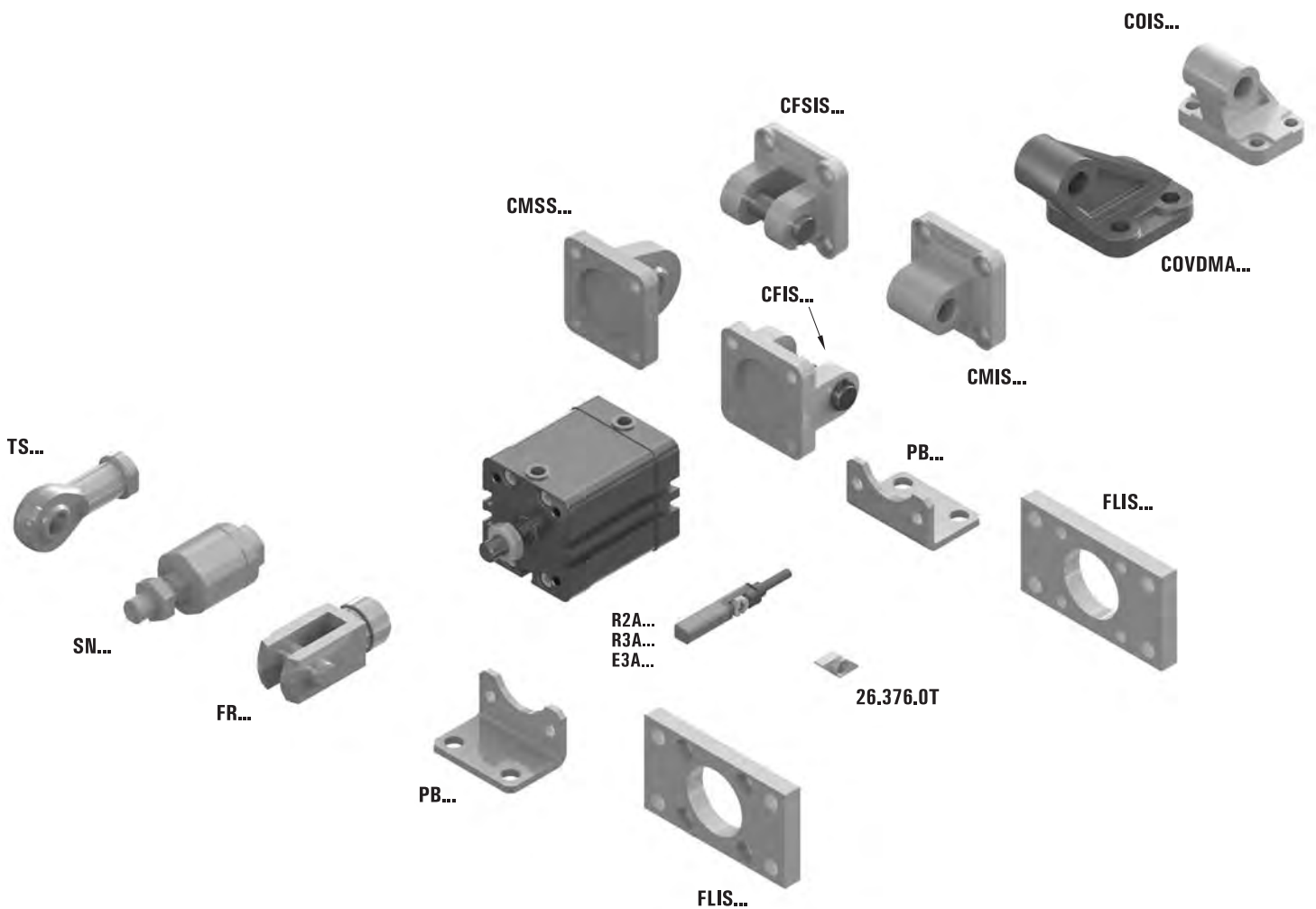


G	F	E	D	C	B	A	∅	B2	C2	D2	E2	F2	G2	H2	I2	codice code
55	10	6.6	60	-	40	76	25	23	26	4	6.6	16	6	71	61	26.536.2
61	10	7	64	32	45	80	32	30	32	4	7	24	11	92	75	26.037.2N
62	10	9	72	36	52	90	40	30	36	4	9	28	8	101	80	26.038.2N
65	12	9	90	45	65	110	50	36	45	5	9	32	15	109	85	26.039.2N
69	12	9	100	50	75	120	63	35	50	5	9	32	13	113	89	26.040.2N
80	16	12	126	63	95	150	80	47	63	5	12	41	14	136	105	26.041.2N
93	16	14	150	75	115	170	100	53	75	8	14	41	16	149	118	26.042.2N



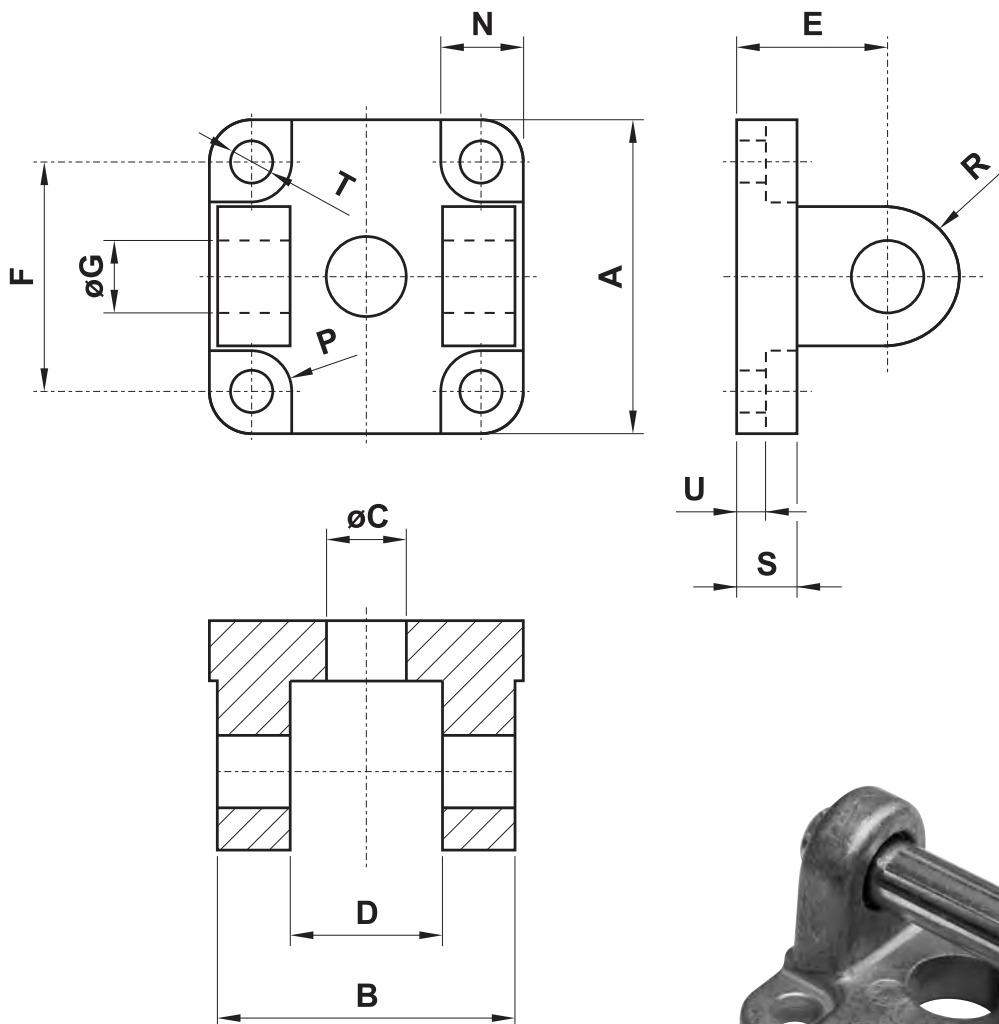
SCHEMA PER LA SCELTA DEGLI ACCESSORI ISO 21287

scheme for the choice of accessories ISO 21287



6

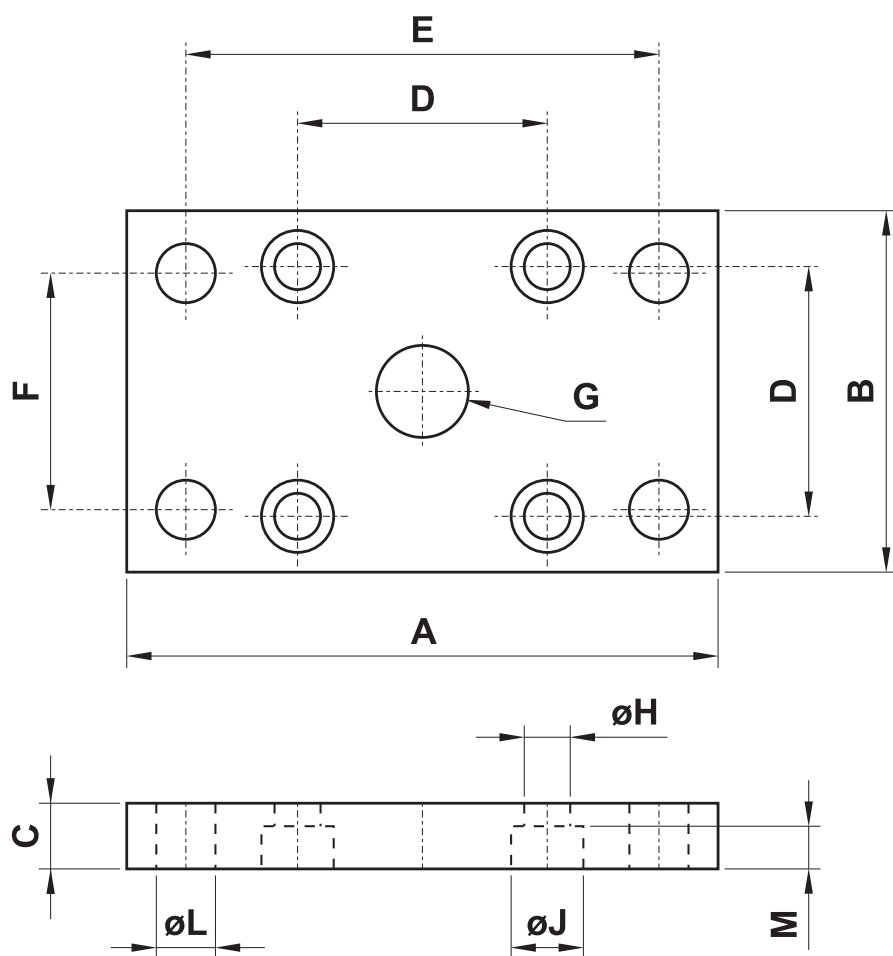
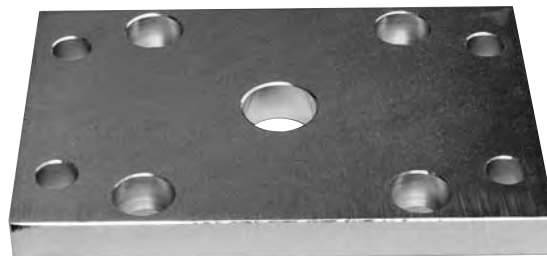
CERNIERA FEMMINA CON PERNO (female hinge with pin)



sigla part number	sigla part number	per alesaggio for bore	A	B	C	D	E	F	G	N	P	R	S	T	U
standard	con boccia di bronzo														
CFUN032	CFKN032	32	48	45	14	26	22	32	10	13.5	5.5	10	9	6.6	5.5
CFUN040	CFKN040	40	58	52	14	28	25	42	12	13.5	5.5	12.5	9	6.6	5.5
CFUN050	CFKN050	50	66	60	18	32	27	50	12	15.5	7.5	12.5	11	9	6.5
CFUN063	CFKN063	63	83	70	18	40	32	62	16	18	7.5	15	11	11	6.5
CFUN080	CFKN080	80	102	90	23	50	36	82	16	19	9	15	13	11	10
CFUN100	CFKN100	100	123	110	28	60	41	103	20	19	9	20	15	11	10

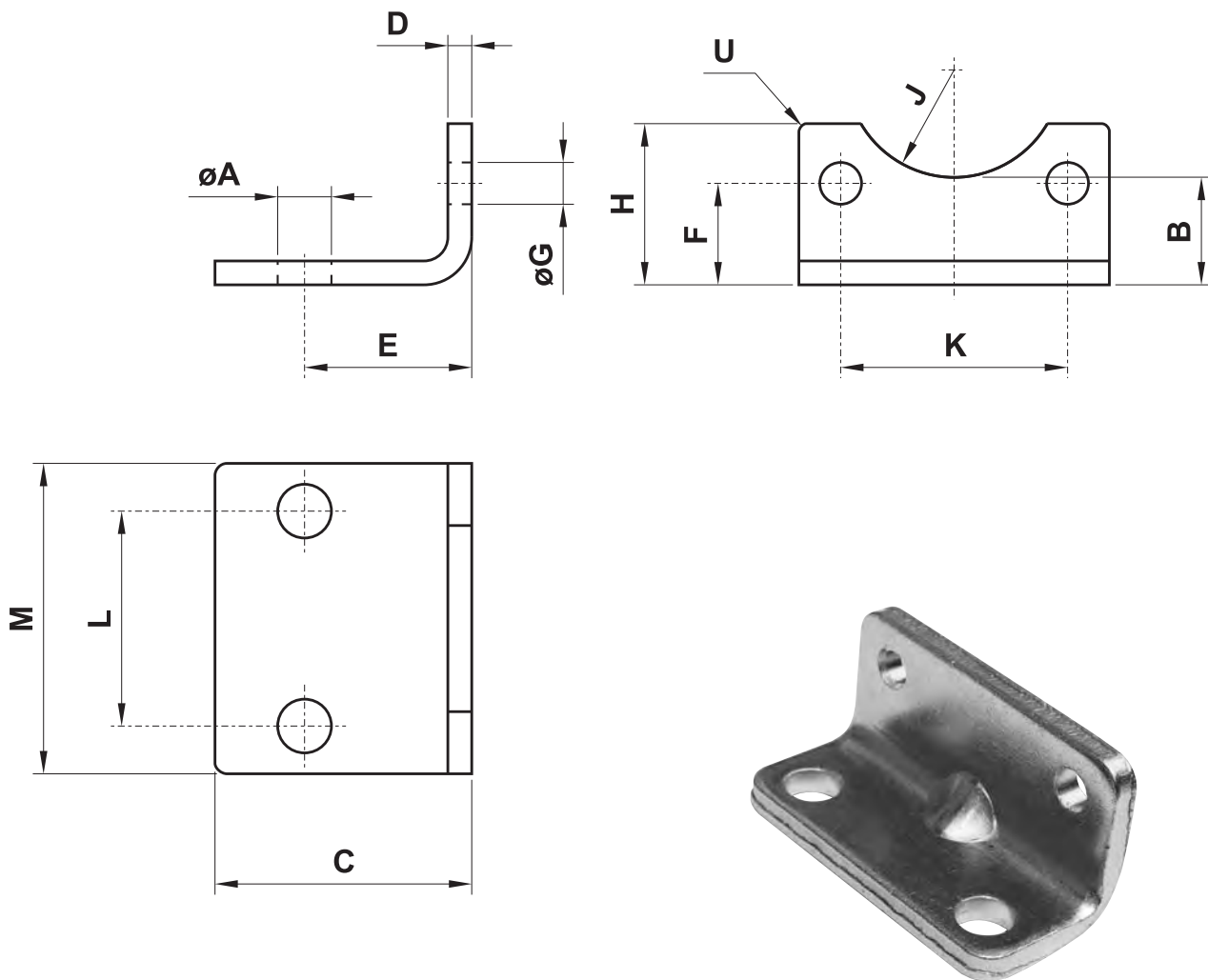


FLANGIA (flange)



sigla part number	per alesaggio for bore	A	B	C	D	E	F	G	H	J	L	M
FLUN032	32	80	50	10	32	65	32	∅14	6.6	11	7	6.4
FLUN040	40	102	60	10	42	82	36	∅14	6.6	11	9	6.4
FLUN050	50	110	68	12	50	90	45	∅18	9	15	9	8.6
FLUN063	63	130	87	15	62	110	50	∅18	11	15	9	8.6
FLUN080	80	160	107	15	82	135	63	∅23	11	18	12	10.6
FLUN100	100	190	128	15	103	163	75	∅28	11	18	14	10.6

PIEDINO (foot mounting)



sigla* part number*	per alesaggio for bore	A	B	C	D	E	F	G	H	J	K	L	M	U
PBUN025	25	6.6	19	22	4	16	17	5.4	23	11	26	26	40	2
PBUN032	32	6.6	20	26	5	18	16	6.6	24	12	32	32	50	2
PBUN040	40	9	-	28	5	20	21.5	6.6	29.5	-	42	42	60	5
PBUN050	50	9	-	32	6	24	22	9	30	-	50	50	68	5
PBUN063	63	11	-	39	6	27	28.5	9	39	-	62	62	84	5
PBUN080	80	11	-	42	8	30	24.5	11	36.5	-	82	82	102	5
PBUN100	100	13.5	-	45	8	33	26.5	11	38.5	-	103	103	123	5

* La sigla si riferisce a un solo piedino e non alla coppia

* The part number is referred to only one element and not to the couple

MONTAGGIO DEL CILINDRO SENZA UTILIZZARE I FISSAGGI

mounting the cylinder without using fixing elements

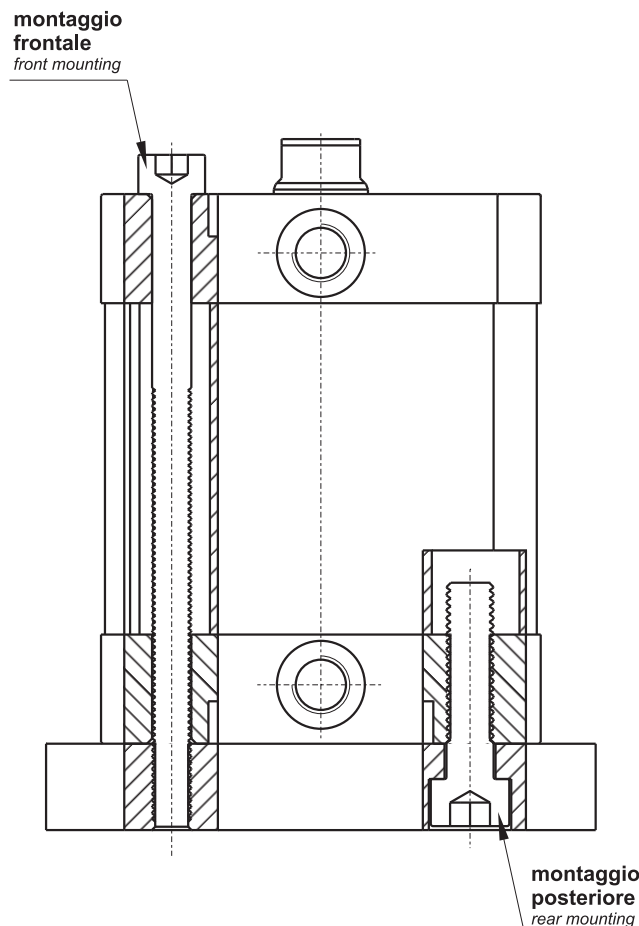
I cilindri compatti possono essere fissati anteriormente o posteriormente mediante viti di opportuna lunghezza utilizzando i fori passanti presenti nelle testate e nella camicia. Usare viti amagnetiche per evitare interferenze con il magnete del pistone.

Attenzione: questo tipo di montaggio non è possibile per i cilindri compatti UNITOP $\varnothing 80$ e $\varnothing 100$ in quanto i fori di fissaggio presenti nelle testate non sono passanti.

The compact cylinders can be mounted on the front or on the rear side with screws of appropriate length using the passing-through holes present in the end-cups and in the barrel.

Use non-magnetic screws to avoid interference with the magnet in the piston.

Attention: *this type of mounting is not possible for UNITOP $\varnothing 80$ and $\varnothing 100$ compact cylinders, because the fixing holes in the end-cups are not passing-through.*



6